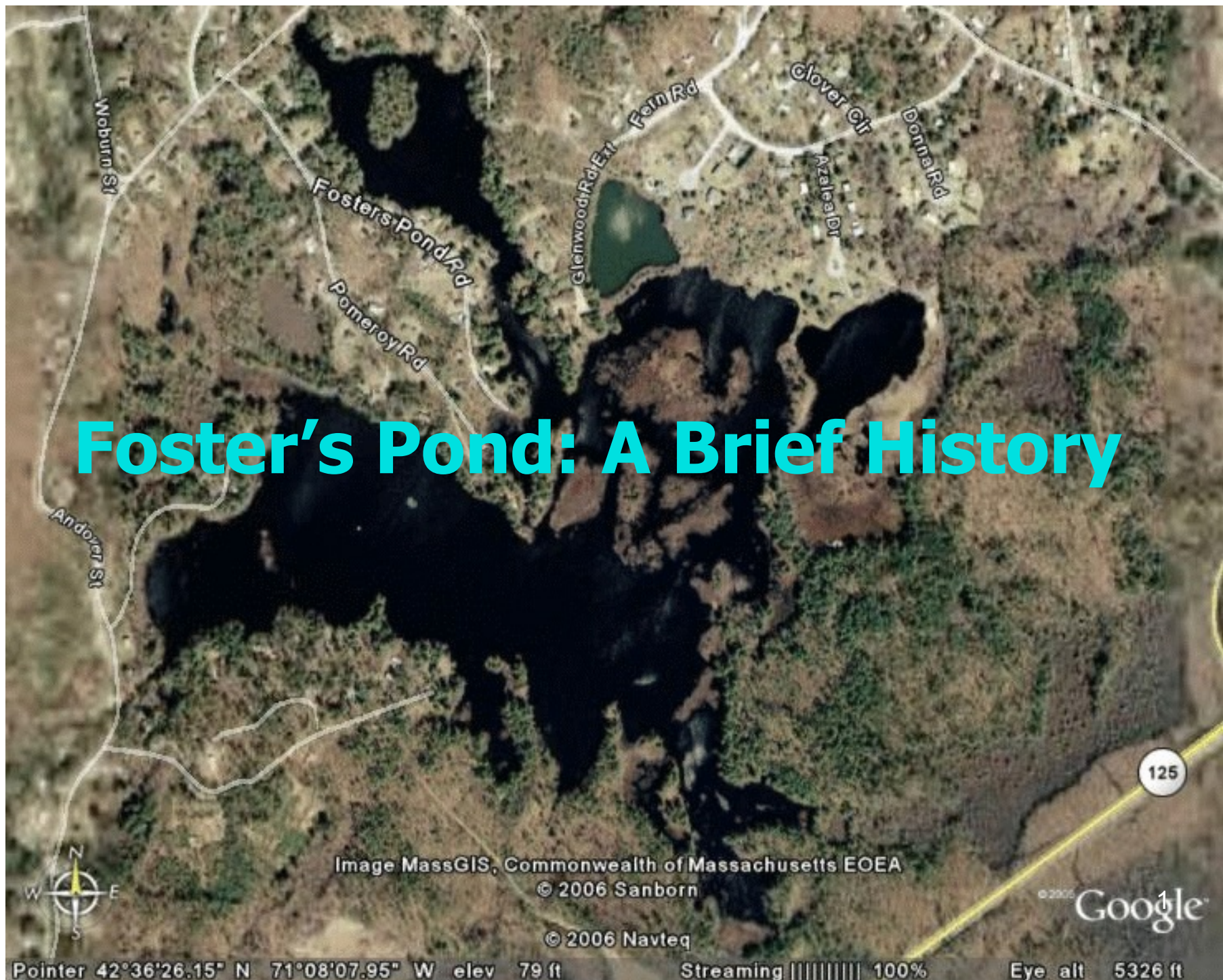


Foster's Pond: A Brief History



Foster's Pond . . .

Named for Andrew Foster, the 22nd man to settle in Andover.

He died in 1685 at the age of 106, "leaving to my deare and loving wife Ann Foster, the use and sole liberty of living in that end of my house I now live in."

Ann did not live happily ever after.



Ann Foster . . .

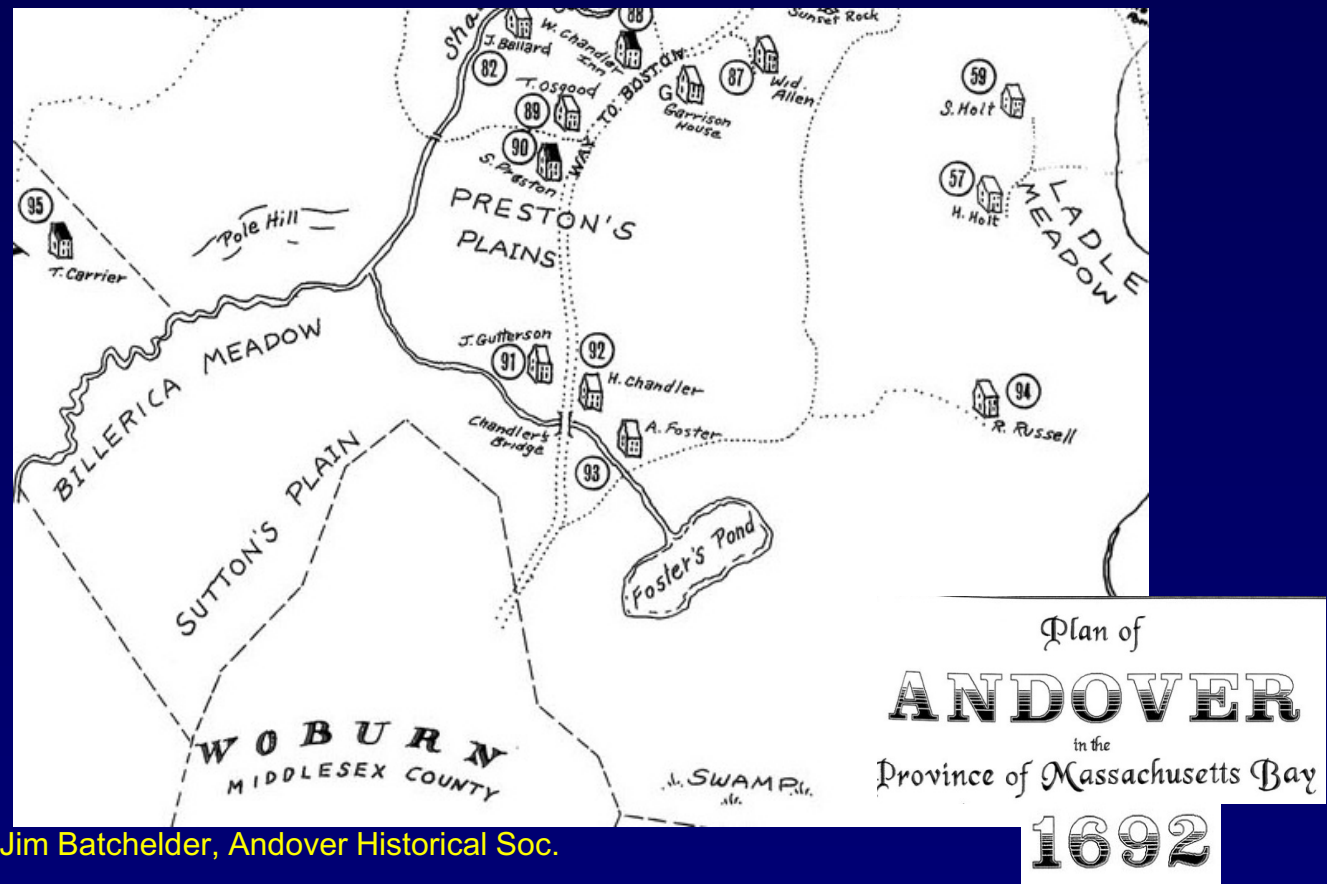
Was accused of witchcraft during the Salem witch trials in 1692-93.

Aged and infirm, Ann (along with her daughter and granddaughter) were picked out of a line-up by several girls from Salem. Mercilessly badgered by white-wigged magistrates in the Salem court, she finally confessed that she had caused Goodwife Ballard's illness, bewitched John Lovejoy's hogs, and rode to covens on a broomstick.

After 21 weeks in a tiny, hot cell, she died in prison. Her son Abraham paid the jailer 2 pounds, 10 shillings to retrieve her body.



Although this map is more art than survey, it captures the original shape of Foster's Pond, shortly after Ann died in prison. That "A. Foster" closest to Foster's Pond is Abraham, the son of Andrew and Ann.



Jim Batchelder, Andover Historical Soc.



1795

“Fosters pond 50 acres”

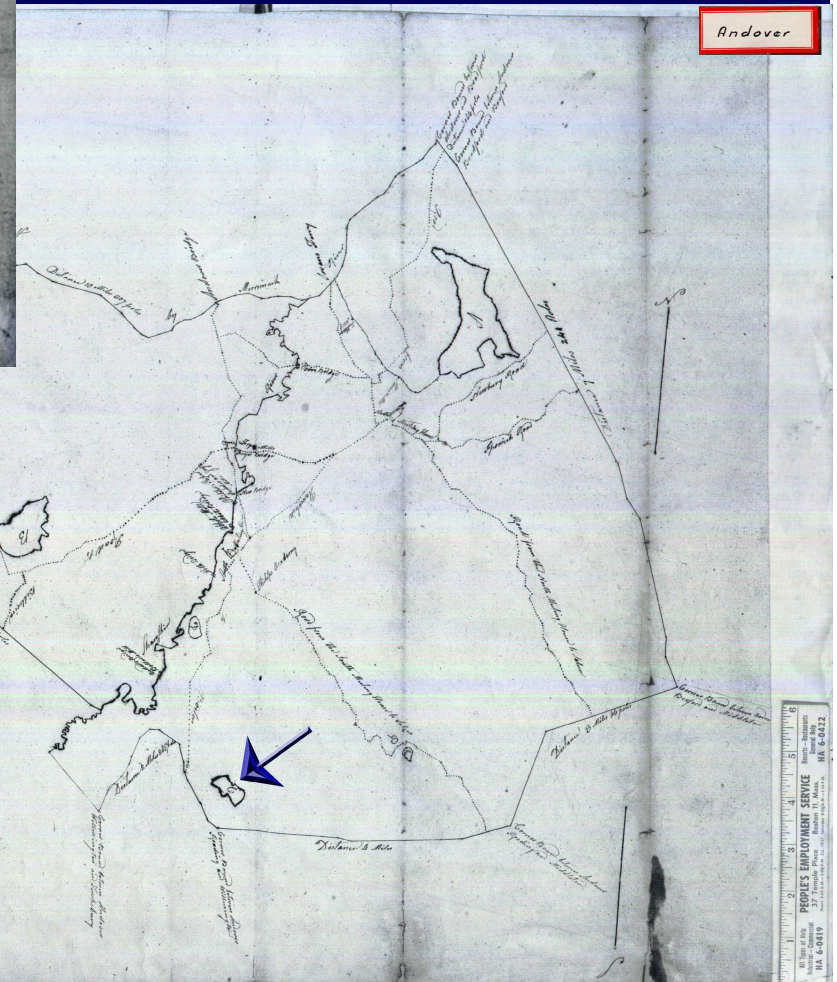
A plan of the Town of Andover taken by the Subscribers & Committee appointed by the Inhabitants of said Town for that purpose agreeable to a resolution of the General Court of June 18th one Thousand Seven Hundred and Ninety four

The distance from the North Meeting house in said Town to Winton 25 miles
 From the South do. to do. 22 1/2 do.
 From said Meeting houses to Salem 17 do. each

A. The great pond 46 1/2 Acers. B. Haggate pond 220 Acers. C. Foster pond 50 Acers.
 D. B. Harris pond 37 1/2 Acers. E. River dam pond 3 1/2 Acers. F. Hobbins pond 2 Acers.
 N. B. Shampain river 3 rods in width
 Protracted by a Scale of two Hundred rods to an Inch

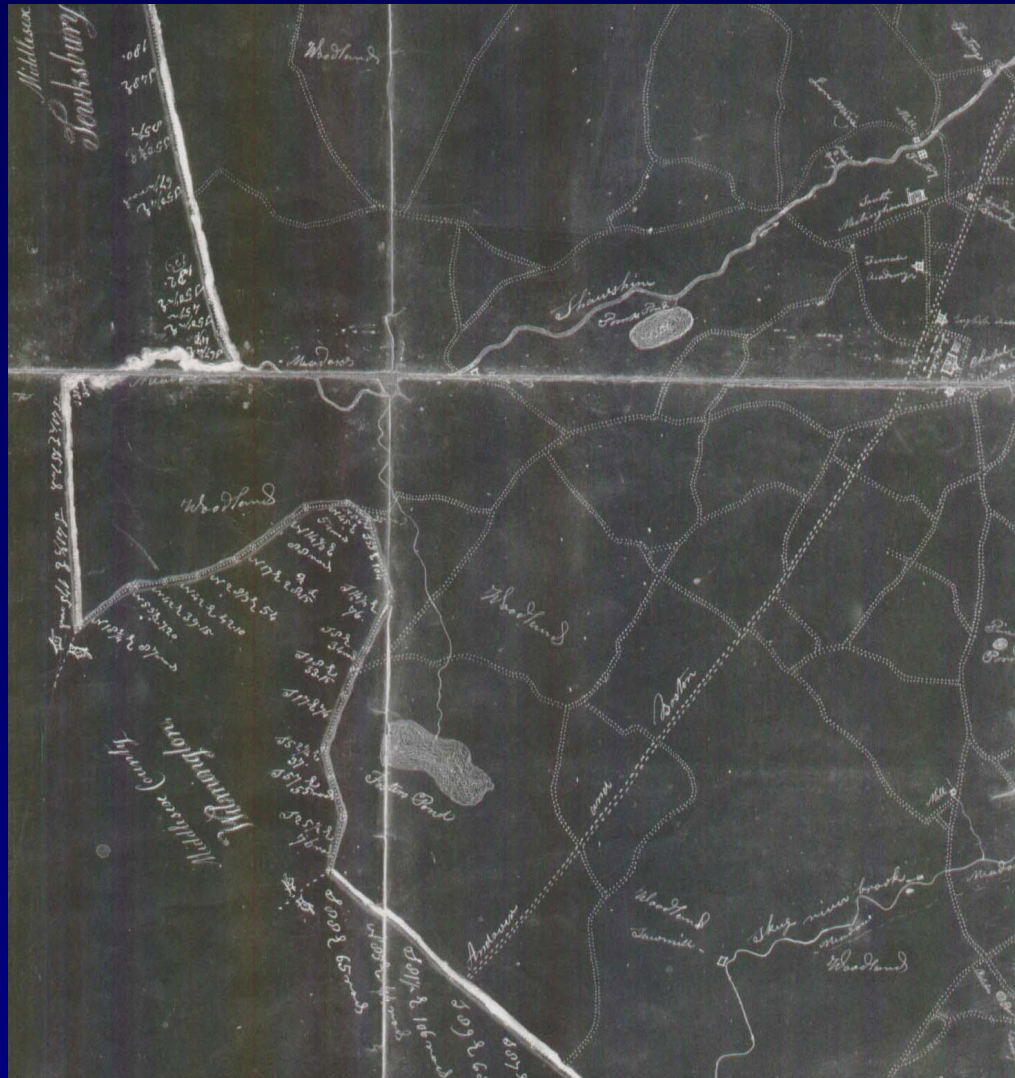
Andover June 1st 1795

John Innum }
 Joshua Willson } Committee
 Gadiah Holt }
 John Innum }
 Moses Abbot } Surveyors



This formal survey shows the original configuration of Foster's Pond, long before the dam was built. The blue arrow has been digitally inserted to highlight the speck of a Pond.

1830

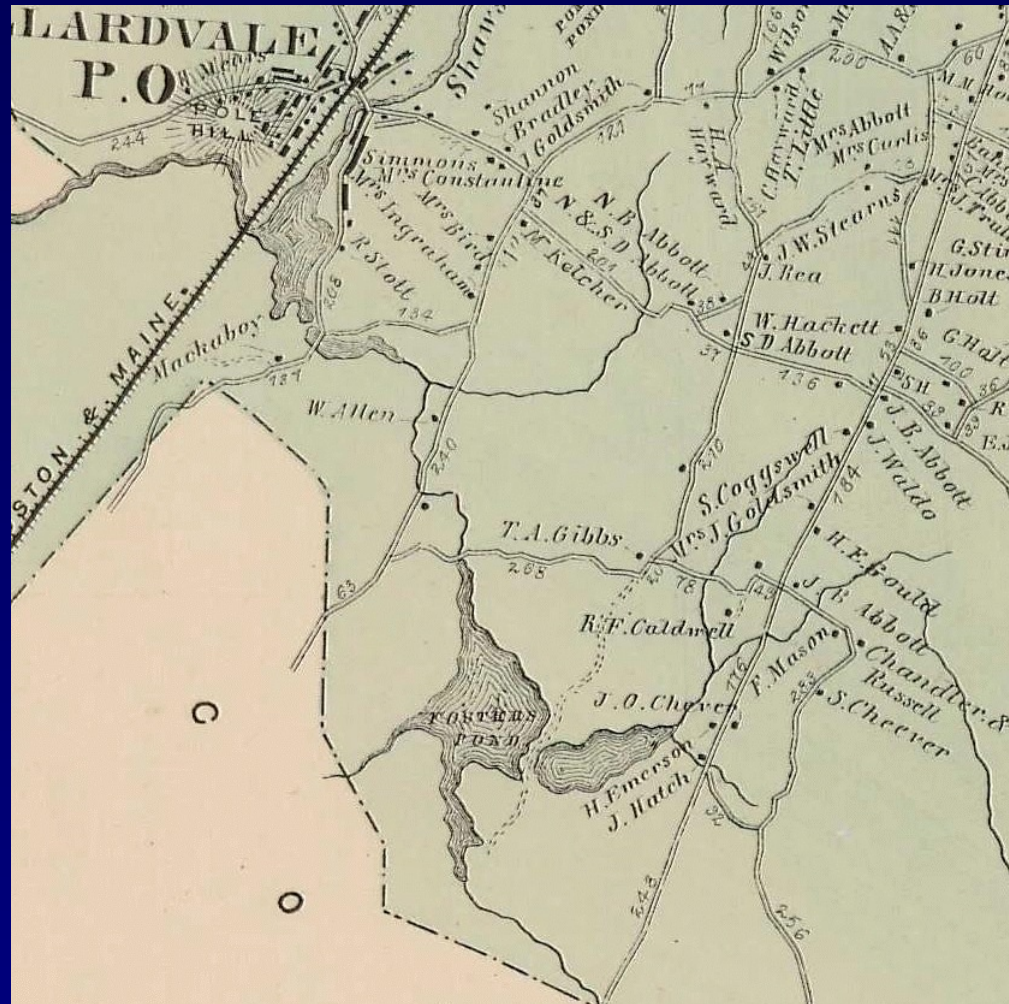


In 1830, with construction of the Foster's Pond Dam still two decades in the future, Foster's Pond looked pretty much unchanged from its shape on that 1795 map in the previous slide.



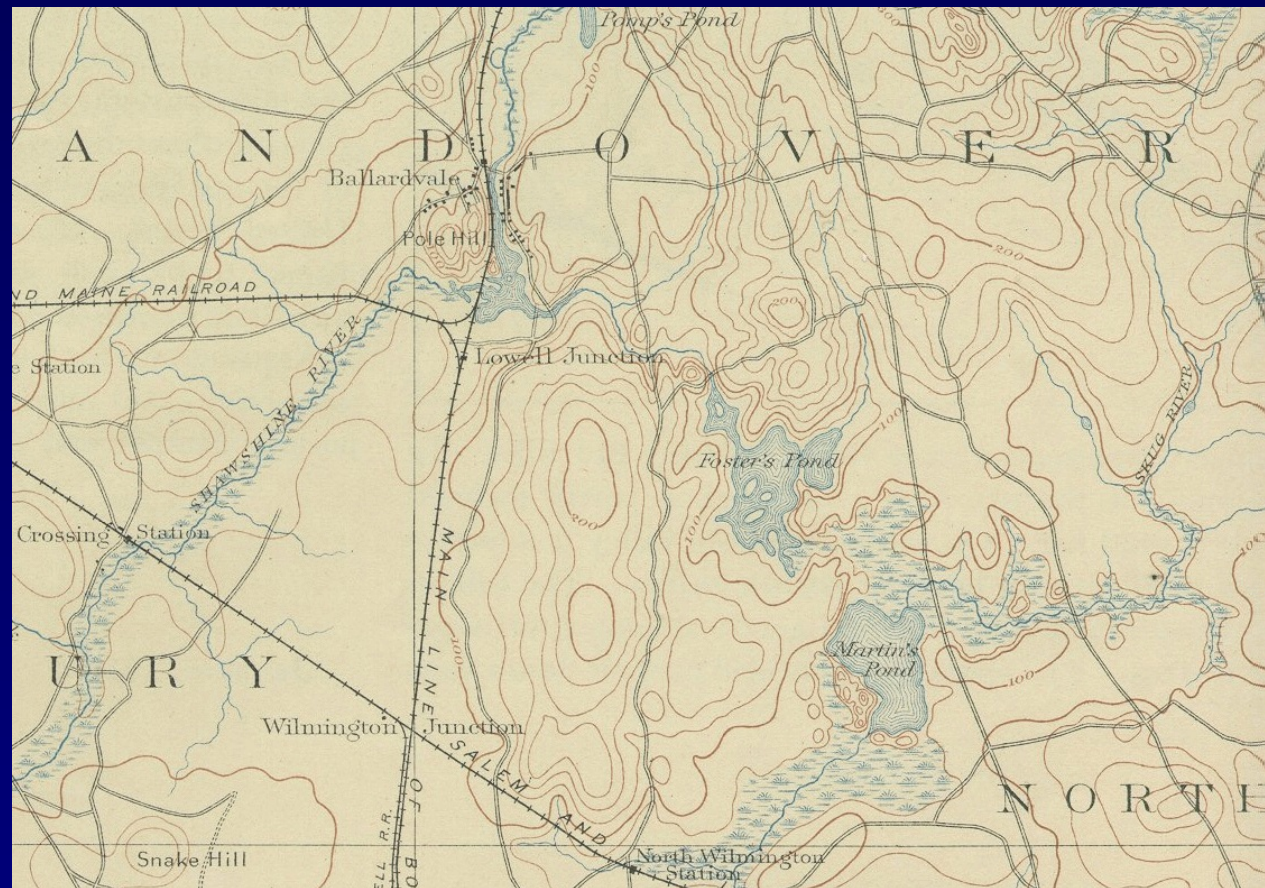
1872

The Foster's Pond Dam, built in the early 1850's, changed the size and shape of the Pond, but the process was slow. Nearly 20 years after the dam was constructed, the Pond bore little resemblance to today's appearance.



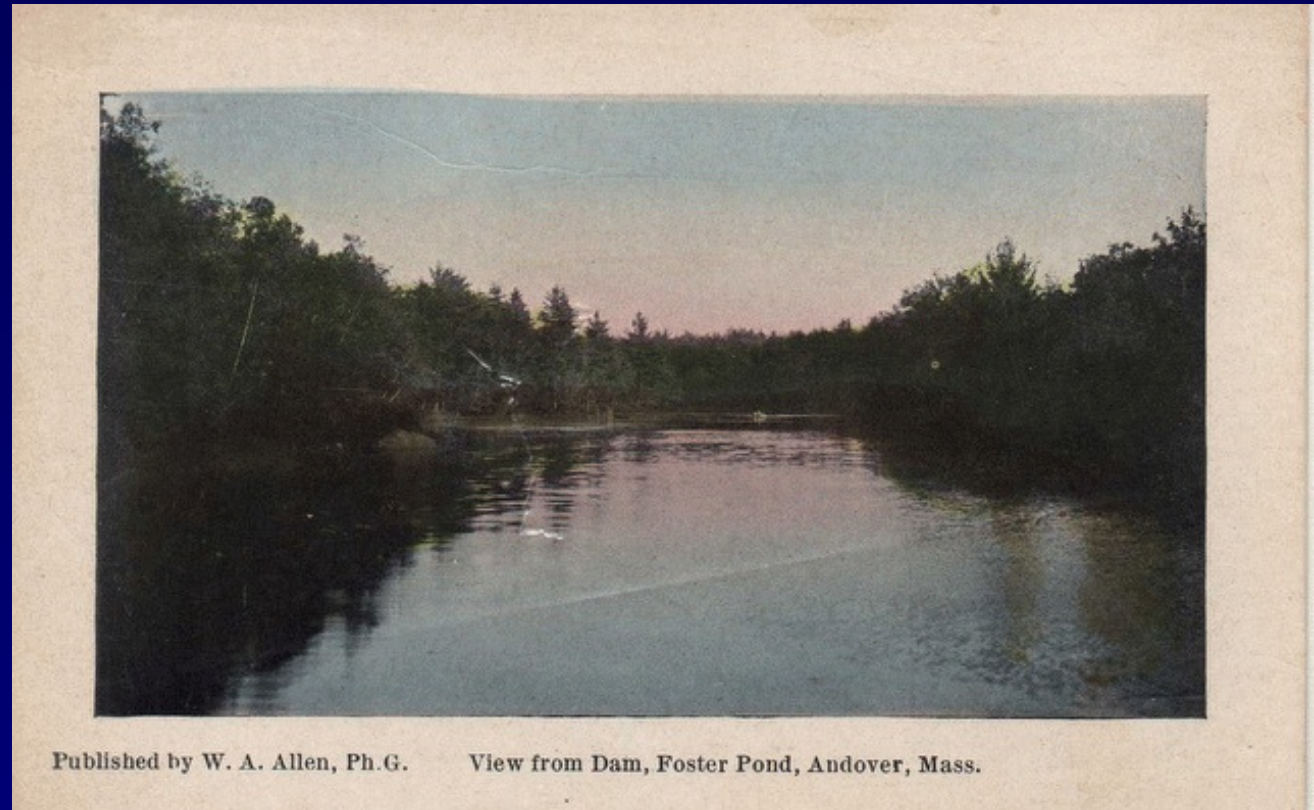
1886

Today's "flying duck" shape (note the FPC logo in the lower right) took decades to emerge. More than 30 years after the dam was built, the Pond was still growing slowly. Ultimately, the Pond would more than double in size.



1905?

Postcards with local scenes became a fad in the early 1900s. There was an entire series of Foster's Pond photos, including this view from the dam. Note the lone house, one of the summer "camps" that were starting to populate the Pond as it grew in expanse and depth.



Although it's hard to tell for sure, that house seems to be on Rock Island.

Courtesy of Dave Dargie

1910

The Foster's Pond Dam went through a number of configurations. Here, water pours over a wooden spillway. Gates under the spillway could be opened to increase the flow to downstream mills in Ballardvale.

The wooden spillway was removed in 1916 and the area under it filled with concrete.



Photo courtesy Andover Historical Society



The earliest government inspection of the dam, in 1913, found it to be in "very bad" condition, with the timber spillway "all going to pieces."

The entry in the lower right-hand corner, updated in 1916, notes that the rotting timbers had been replaced by concrete. The inspector wrote down the owner's name (Homer Foster), spelling it the way he must have heard it pronounced: "Homma Foster".

1913 -
1916

COUNTY OF ESSEX, MASSACHUSETTS
ENGINEERING DEPARTMENT

Inspection of Dams, Reservoirs, and Stand Pipes

O 102-50
SUB NUMBER
D 11 R S P
Neg. Nos. 1137-2
2163

Inspector C. C. Barker Date Nov. 7, 1913 *Classification 2

City or Town Andover Location Northerly end of Foster Pond on the Rattlesnake Hill Road

Owner Under joint control of Mill owner on the Use Storage of water for power

Material and Type Earth fill dam with a dry rubble wall on the down stream side & sloped on the upstream side

Elevations in feet: above (+) or below (-) full pond or reservoir level. (Cross out what does not apply.)

For Dam
Bed of stream below 2.5 Bottom of pond Bottom of spillway Top of dam Top of flash boards

For Res. or S. P.
Ground surface below Bottom of res Level of over-flow pipe Top of res

For dam
Length in ft. 115 Top width in ft. 10 Pond area 125± ave. Area of watershed 2 1/4± sq. mi

For Res. or S. P.

Inside dimensions Capacity covered open

Length of overflow or spillway 10' 12' x 8" Outlet pipes (size and nature)

Stand pipe, thickness at base diam of rivet head Pitch free

Foundation and details of construction sign of leakage

Constructed by and date 1880

Recent repairs and date 1913

Evidence of leakage A great deal of leakage on the bottom (very bad)

Condition Very bad lower wall is falling down around the gate

Topography of country below low swampy land below

Nature, extent, proximity, etc. of buildings, roads or other property in danger if failure should occur Only damage would be done to the road

Plans and data secured or available

Use separate sheet for sketches if necessary.

Notes, sketches, sections, etc. Max depth of head on gate is 10 ft. dam is 10 ft high. The spillway or overflow is about 10 ft wide is on top of the dam is made of timber & is in bad condition all going to pieces. The outlet gate is 10 ft high & 5 ft wide & is well braced.

The timber spillway has been replaced with concrete gate, has been filled in below gate.

Homma Foster

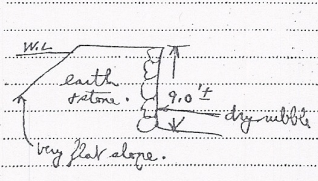
Jan Con. Nov. 7, 1916

76 C. Barker

*Classify as to probable damage in case of failure. 1 slight. 2 moderate. 3 serious.

O 102-50
D 11 R S P

From my Memoir of water
98 Central St.



The timber spillway has been replaced with concrete gate, has been filled in below gate.

Homma Foster

Jan Con. Nov. 7, 1916

76 C. Barker



Throughout the early 1900s, the community of summer residents continued to expand, and the number of uninsulated summer “camps”, without electricity, continued to grow. They relied on outhouses for sanitation, and the only access was unpaved roads crudely carved through the woods.

These photos are undated. Frame construction, clapboards, and milled lumber became the materials of choice as newer camps were built.

In 1927, the community held a clambake. 74 people attended.



Courtesy of Dave Dargie



1935

Some of the camps were much more elaborate. The Davis camps, on what became known as the Main Pond, included a house on a small island reached by a foot bridge.

The land is now part of the Foster's Pond Reservation, and the bridge has been restored.

The camp itself has long since disappeared.



Photo courtesy Andover Historical Society and Judy Goonyep



1939?

Crockett's store, on the shore of the Pond a stone's throw from the dam, was the kind of place parents told their kids to stay away from.

Alcohol was sold under the counter, even though deeds for many of the camps around the Pond prohibited the use or storage of "intoxicating liquors."

Despite (or maybe because of) parental warnings, kids frequented the store to buy candy.



The Foster's Pond Corporation was founded on October 30, 1939.

Of the 16 signers of the Articles of Organization, only 2 lived on the Pond; the others owned "camps" but lived elsewhere.

The new corporation gave its office address as "Rock Island, Foster's Pond." That's where the first president, Andrew Robinson, owned a camp.

In 2003, a neighborhood clean-up effort removed the house, which was by then derelict.

1939

The Commonwealth of Massachusetts
DEPARTMENT OF CORPORATIONS AND TAXATION
HENRY F. LONG, COMMISSIONER
236 STATE HOUSE, BOSTON

ARTICLES OF ORGANIZATION

We, _____ President, _____ Treasurer,
_____ Clerk or Secretary, and _____

being a majority of the directors, or _____ (having the powers of directors under authority of section 7 of chapter 180, General Laws), of _____

in compliance with the requirements of section 3 of chapter 180 of the General Laws (Ter. Ed.), do hereby state that the following is a true copy of the agreement of association to form said corporation, with the names of the subscribers thereto:—

We, whose names are hereto subscribed, do, by this agreement, associate ourselves with the intension of forming a corporation under the provisions of chapter 180 of the General Laws (Ter. Ed.), as amended.

The name by which the corporation shall be known is

FOSTER'S POND CORPORATION

The location of the principal office of the corporation to be in Massachusetts is the residence of Andrew G. Robinson at Rock Island, Foster's Pond in Andover

The purposes for which the corporation is formed are as follows:—
to purchase, maintain, repair, and operate the dam regulating the flow of water from Foster's Pond in the Town of Andover for the general benefit, improvement, and beautification of properties bordering on said Pond; to buy, sell, lease, mortgage or exchange such real property as shall be necessary for the proper control and maintenance of said Dam; and, in general to do all things which such a corporation may lawfully do.

The amount of its capital stock (if any) is _____ none _____ dollars
The par value of its shares is _____ none _____ dollars
The number of its shares is _____ none _____

(If seven days' notice is waived, use the following form.)
We hereby waive all requirements of the General Laws of Massachusetts for notice of the first meeting for organization, and appoint the thirtieth day of October 1939, at 5:00 o'clock P. M., at the residence of Llewellyn Fomroy, Andover as the time and place for holding said first meeting.

In WITNESS WHEREOF, we have hereto signed our names this thirtieth day of _____ October _____ in the year nineteen hundred and thirty- nine

Names	Residence (CITY OR TOWN; STREET AND NUMBER)	Amount of Stock Subscribed for
<i>W. C. Lewis</i>	55 Lane Ave. Methuen Mass	
<i>W. H. Lewis</i>	38 Exeter St. Methuen Mass	
<i>W. H. Lewis</i>	5857 Main St. Methuen Mass	
<i>W. H. Lewis</i>	49 Pleasant St. Methuen Mass	
<i>W. H. Lewis</i>	57 North Ave. Methuen Mass	
<i>Andrew G. Robinson</i>	69 Converse Ave. Rock Island, Mass	
<i>W. H. Lewis</i>	90 Eleventh St. Methuen "	
<i>W. H. Lewis</i>	295 Salem St. Lowell "	
<i>W. H. Lewis</i>	18 Montvale St. Methuen "	
<i>W. H. Lewis</i>	34 Reed St. Methuen "	
<i>W. H. Lewis</i>	10 Gibbons St. Lowell "	

Proper First Name should be Written in Full
Initials and abbreviations are not sufficient.
(See additional list on next page)



2005

In 2005, the community reshaped the FPC for the 21st Century, re-organizing it as a tax-exempt non-profit open to everyone who values the Pond as one of Andover's greatest environmental resources.

The Articles of Organization were rewritten to embrace the broader aims of the organization.

The purpose of the corporation is to engage in the following activities: **to preserve, protect and enhance the waters and the environment of Foster's Pond**, a Great Pond located in the Town of Andover; to promote the conservation, protection, and wise management of natural resources, including land and water resources, and the prevention of environmental pollution in the Foster's Pond watershed; to establish and promote programs of public information, education and scientific research relating to the preservation and protection of the natural environment in the vicinity of Foster's Pond; to encourage similar efforts by other organizations, individuals, public agencies, and public officials; **to own, operate, repair and maintain the dam** regulating the flow of water from Foster's Pond, for the general benefit, improvement and beautification of the Pond and its environment; **to acquire, hold, and manage land or rights in land for conservation** purposes and to encourage and assist other organizations and public agencies to do the same within the Foster's Pond watershed; to promote and protect a safe and congenial living and recreational environment for residents and the general public; **to encourage responsible public use** of the Pond's recreational resources; and to engage in related charitable, educational and scientific activities not inconsistent with requirements applicable to non-profit corporations organized under Massachusetts General Laws Chapter 180 and to exempt organizations under Section 501(c)(3) of the Internal Revenue Code.



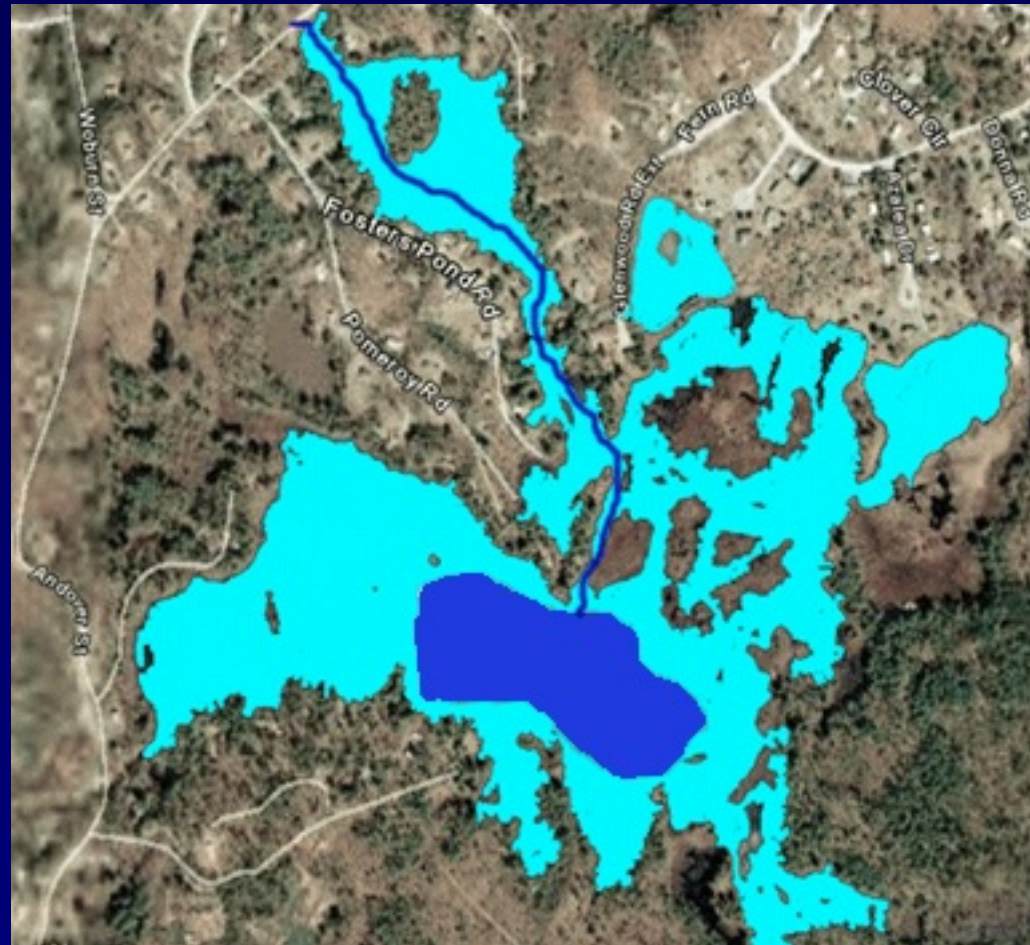
Before and after the dam

The dam enlarged the Pond from 50 acres to about 120.

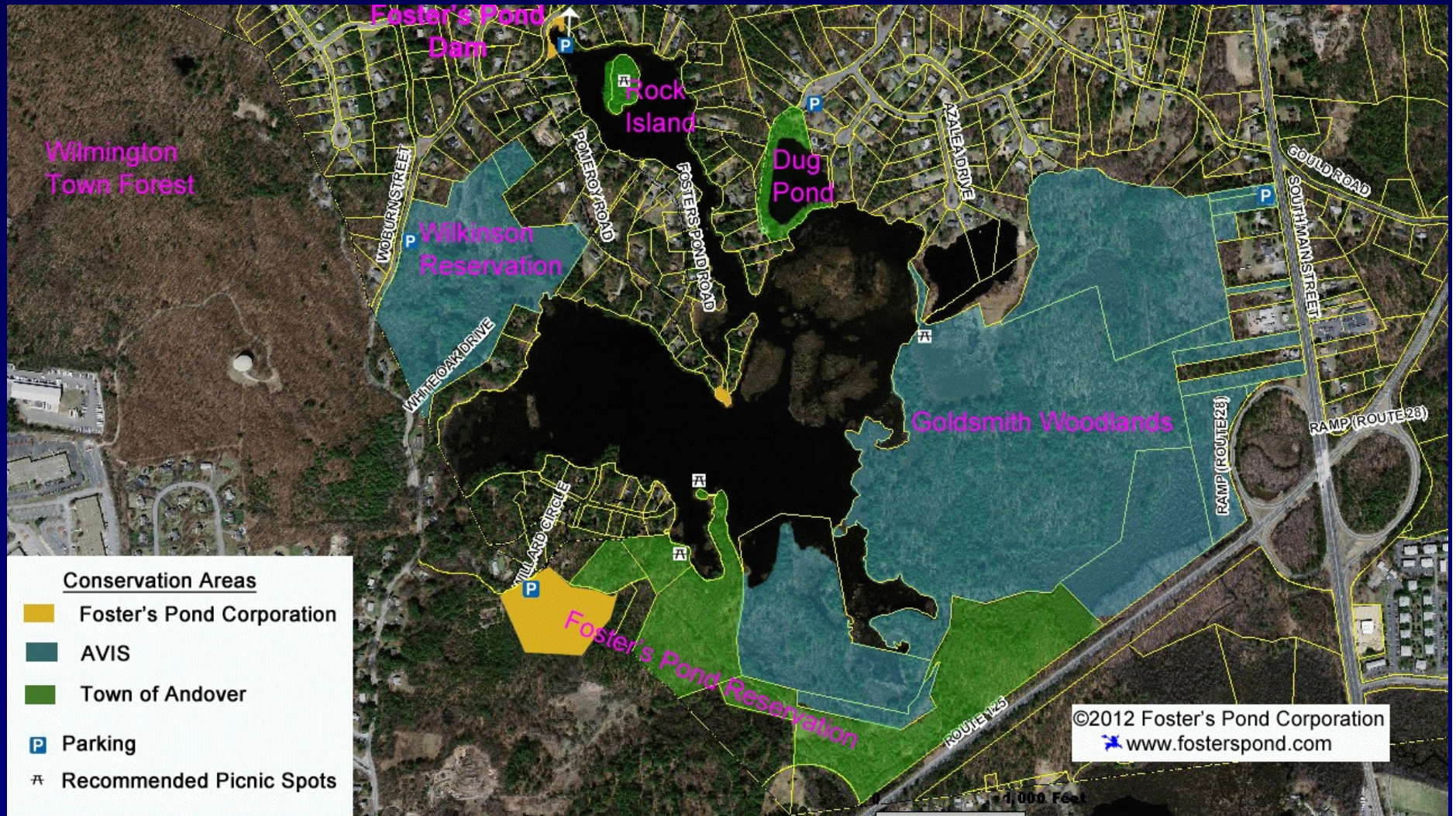
Much of the increased water area is only a foot or two deep. The deepest point in the Main Pond is about 13 feet; the average depth of the Pond is under 7 feet.

Nutrient- rich sediments throughout the expanded Pond nourish weeds and algae which aggravate the lake management challenges we face today.

The Foster's Pond Corporation is the only organization whose mission it is to respond to these challenges.



Foster's Pond Today



The FPC, AVIS, Andover and Wilmington protect 400 acres around the Pond



Dam

Rock Island

Dug Pond

Mill Reservoir

Main Pond

Wilkinson Res.

The Channel

Goldsmith Woodlands

FPC Land

Andover Cons. Land

125

Commonwealth of Massachusetts EOE
© 2006 Sanborn

© 2006 Navteq

Google

Pointer 42°36'26.15" N 71°08'07.95" W elev 79 ft

Streaming ||||| 100%

Eye alt 5326 ft